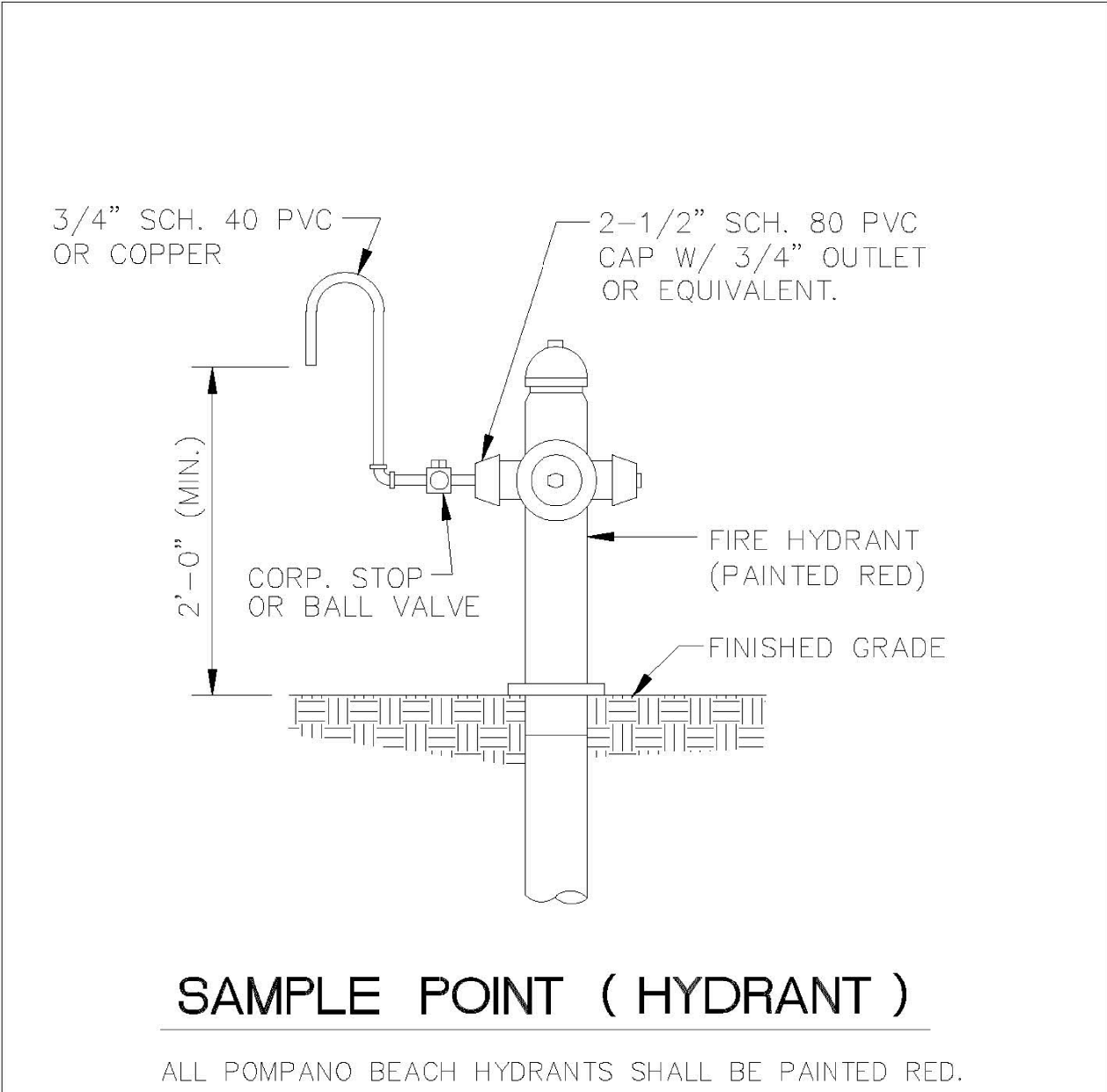


SAMPLE POINT (MAIN)

ALL D.I.P. TO BE PAINTED
BLUE ON TOP HALF OF PIPE.

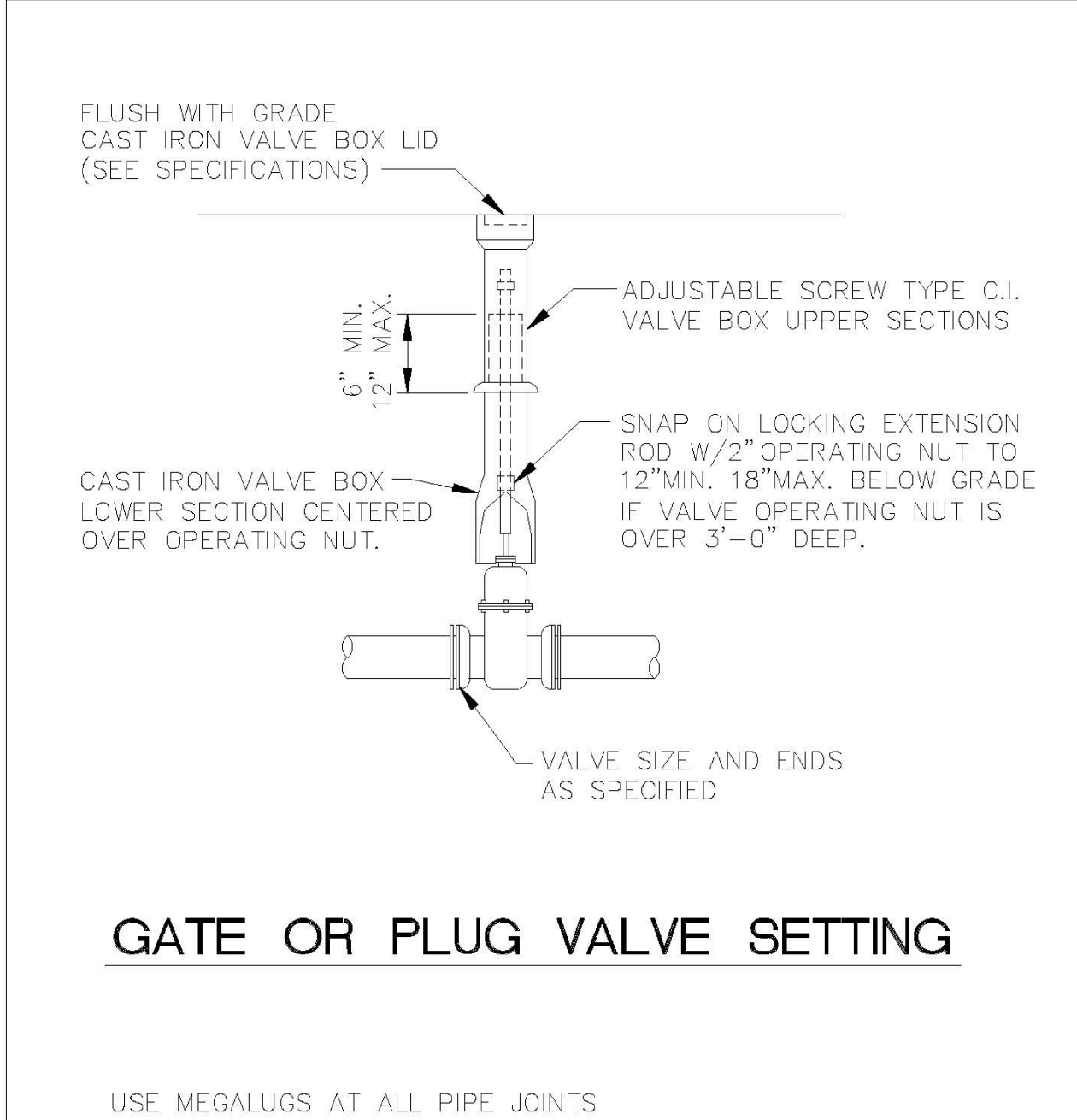
| ENGINEERING STANDARDS 2022 | | | |
|----------------------------|---------|---|----------------------------------|
| REVISIONS | | ENGINEERING DIVISION CITY OF POMPAÑO BEACH | SAMPLE POINT (MAIN) |
| BY | DATE | | |
| S.S. | 04-2005 | | |
| SCALE: N.T.S. | | | DATE: MAY 2022 DWG. NO. 100-1 |



SAMPLE POINT (HYDRANT)

ALL POMPAÑO BEACH HYDRANTS SHALL BE PAINTED RED.

| ENGINEERING STANDARDS 2022 | | | |
|----------------------------|---------|---|----------------------------------|
| REVISIONS | | ENGINEERING DIVISION CITY OF POMPAÑO BEACH | SAMPLE POINT (HYDRANT) |
| BY | DATE | | |
| S.S. | 04-2005 | | |
| SCALE: N.T.S. | | | DATE: MAY 2022 DWG. NO. 101-1 |

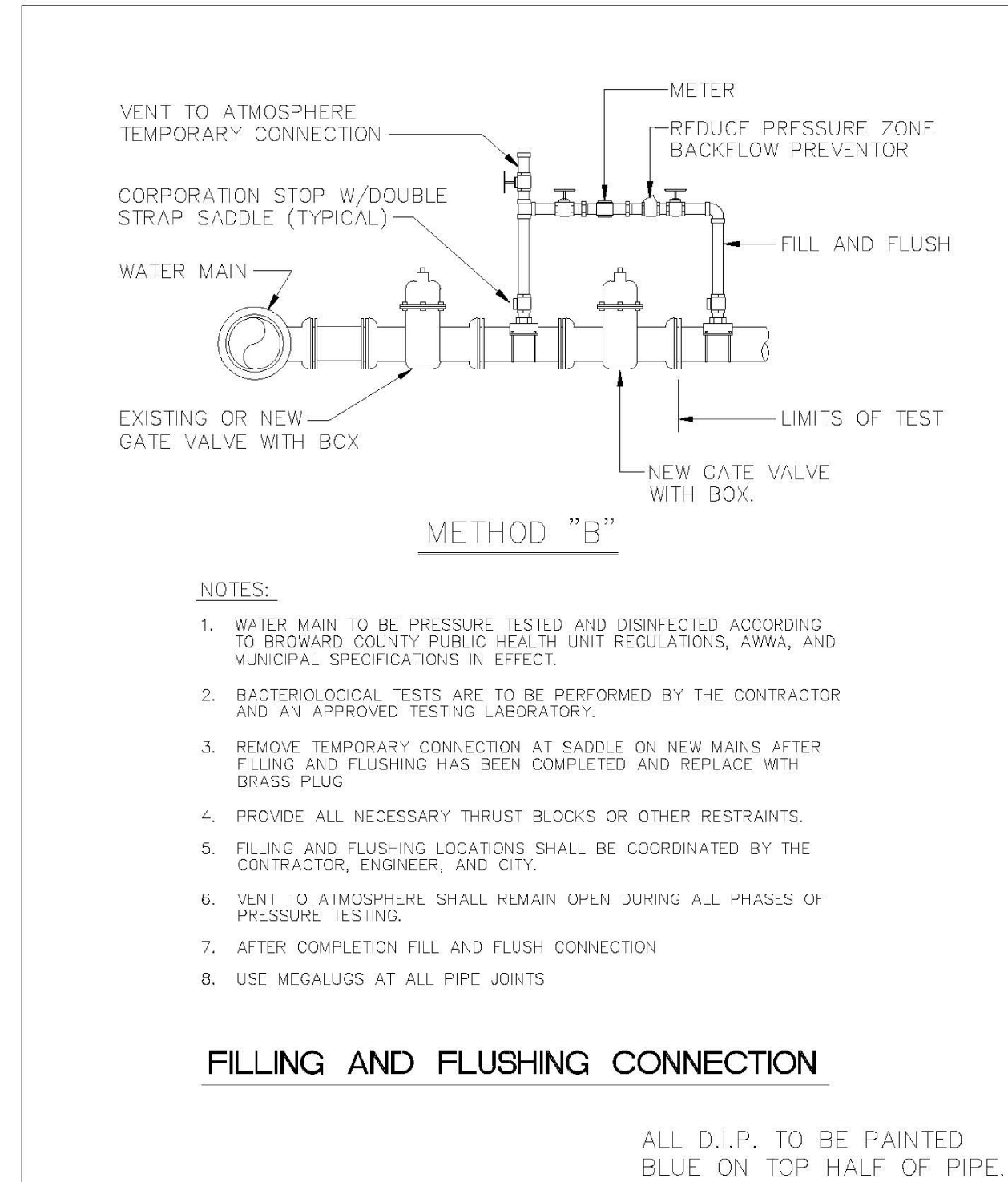


GATE OR PLUG VALVE SETTING

USE MEGALUGS AT ALL PIPE JOINTS

ALL D.I.P. TO BE PAINTED
BLUE ON TOP HALF OF PIPE.

| ENGINEERING STANDARDS 2022 | | | |
|----------------------------|---------|---|----------------------------------|
| REVISIONS | | ENGINEERING DIVISION CITY OF POMPAÑO BEACH | GATE OR PLUG VALVE SETTINGS |
| BY | DATE | | |
| S.S. | 04-2005 | | |
| T.W. | 11-2007 | | |
| SCALE: N.T.S. | | | DATE: MAY 2022 DWG. NO. 103-1 |



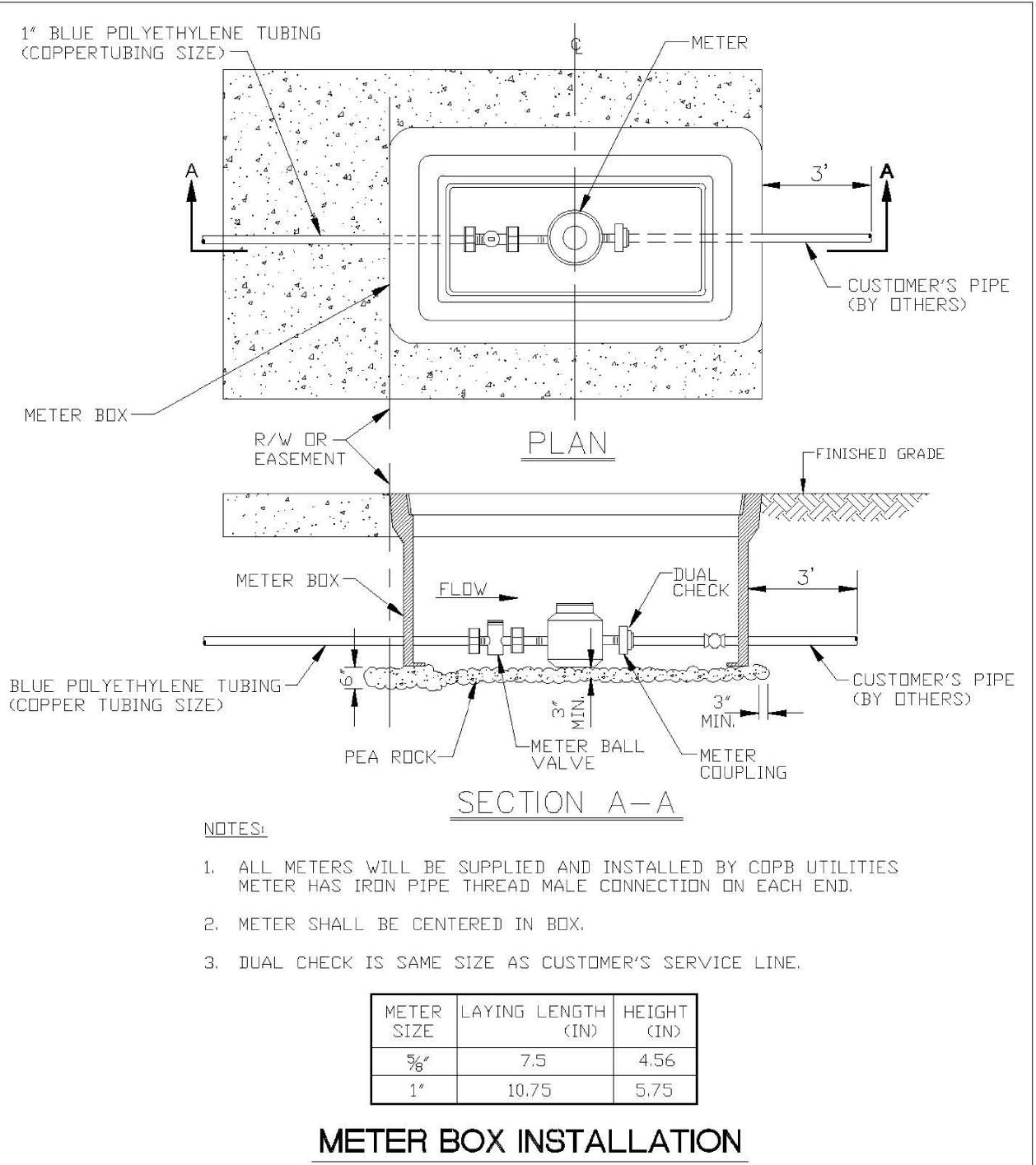
METHOD "B"

- NOTES:
1. WATER MAIN TO BE PRESSURE TESTED AND DISINFECTED ACCORDING TO BROWARD COUNTY PUBLIC HEALTH UNIT REGULATIONS, AWWA, AND MUNICIPAL SPECIFICATIONS IN EFFECT.
 2. BACTERIOLOGICAL TESTS ARE TO BE PERFORMED BY THE CONTRACTOR AND AN APPROVED TESTING LABORATORY.
 3. REMOVE TEMPORARY CONNECTION AT SADDLE ON NEW MAINS AFTER FILLING AND FLUSHING HAS BEEN COMPLETED AND REPLACE WITH BRASS PLUG
 4. PROVIDE ALL NECESSARY THRUST BLOCKS OR OTHER RESTRAINTS.
 5. FILLING AND FLUSHING LOCATIONS SHALL BE COORDINATED BY THE CONTRACTOR, ENGINEER, AND CITY.
 6. VENT TO ATMOSPHERE SHALL REMAIN OPEN DURING ALL PHASES OF PRESSURE TESTING.
 7. AFTER COMPLETION FILL AND FLUSH CONNECTION
 8. USE MEGALUGS AT ALL PIPE JOINTS

FILLING AND FLUSHING CONNECTION

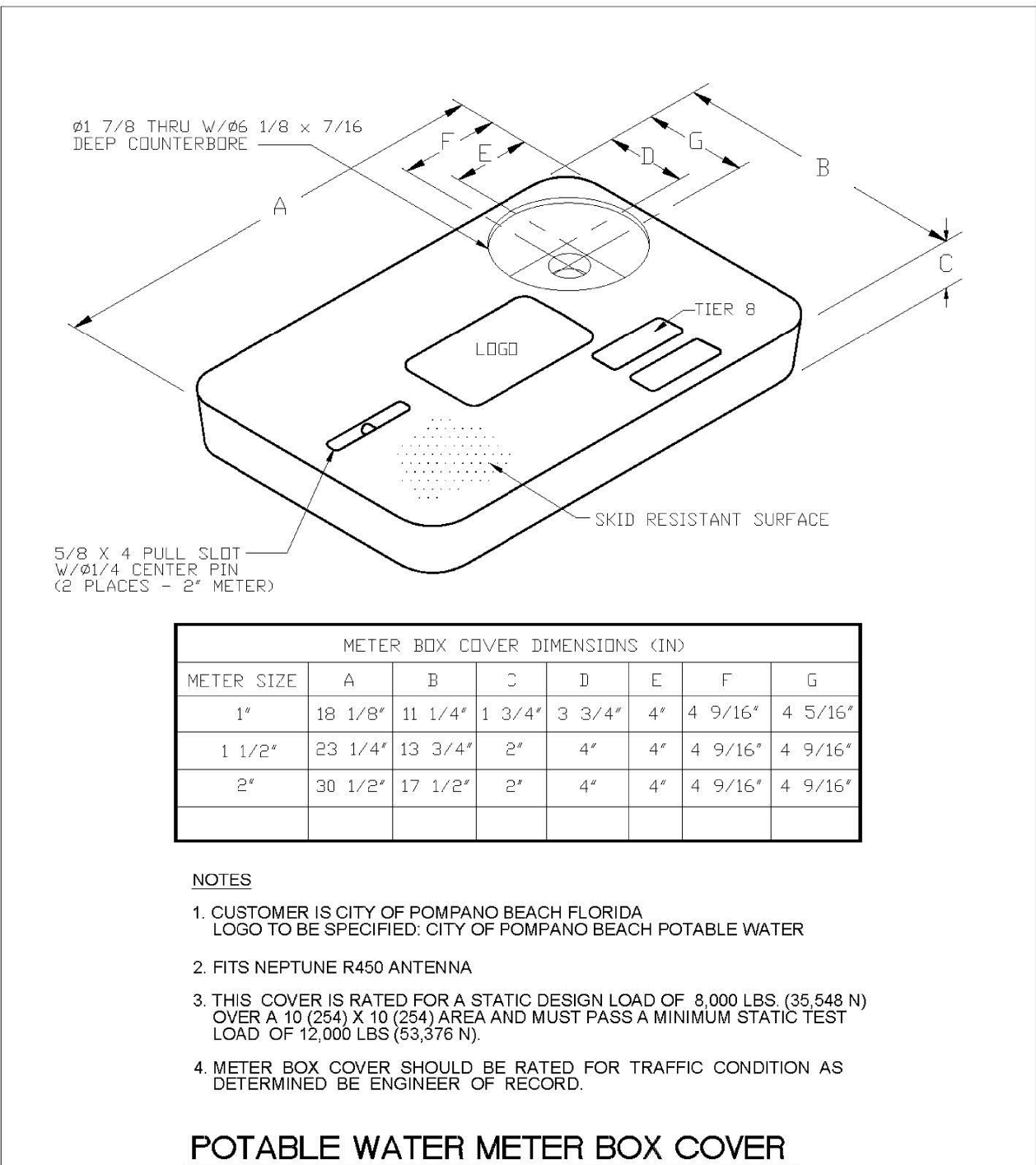
ALL D.I.P. TO BE PAINTED
BLUE ON TOP HALF OF PIPE.

| ENGINEERING STANDARDS 2022 | | | |
|----------------------------|---------|---|----------------------------------|
| REVISIONS | | ENGINEERING DIVISION CITY OF POMPAÑO BEACH | FILLING / FLUSHING CONNECTION |
| BY | DATE | | |
| S.S. | 04-2005 | | |
| T.W. | 11-2007 | | |
| S.S. | 01-2012 | | |
| SCALE: N.T.S. | | | DATE: MAY 2022 DWG. NO. 104-1 |



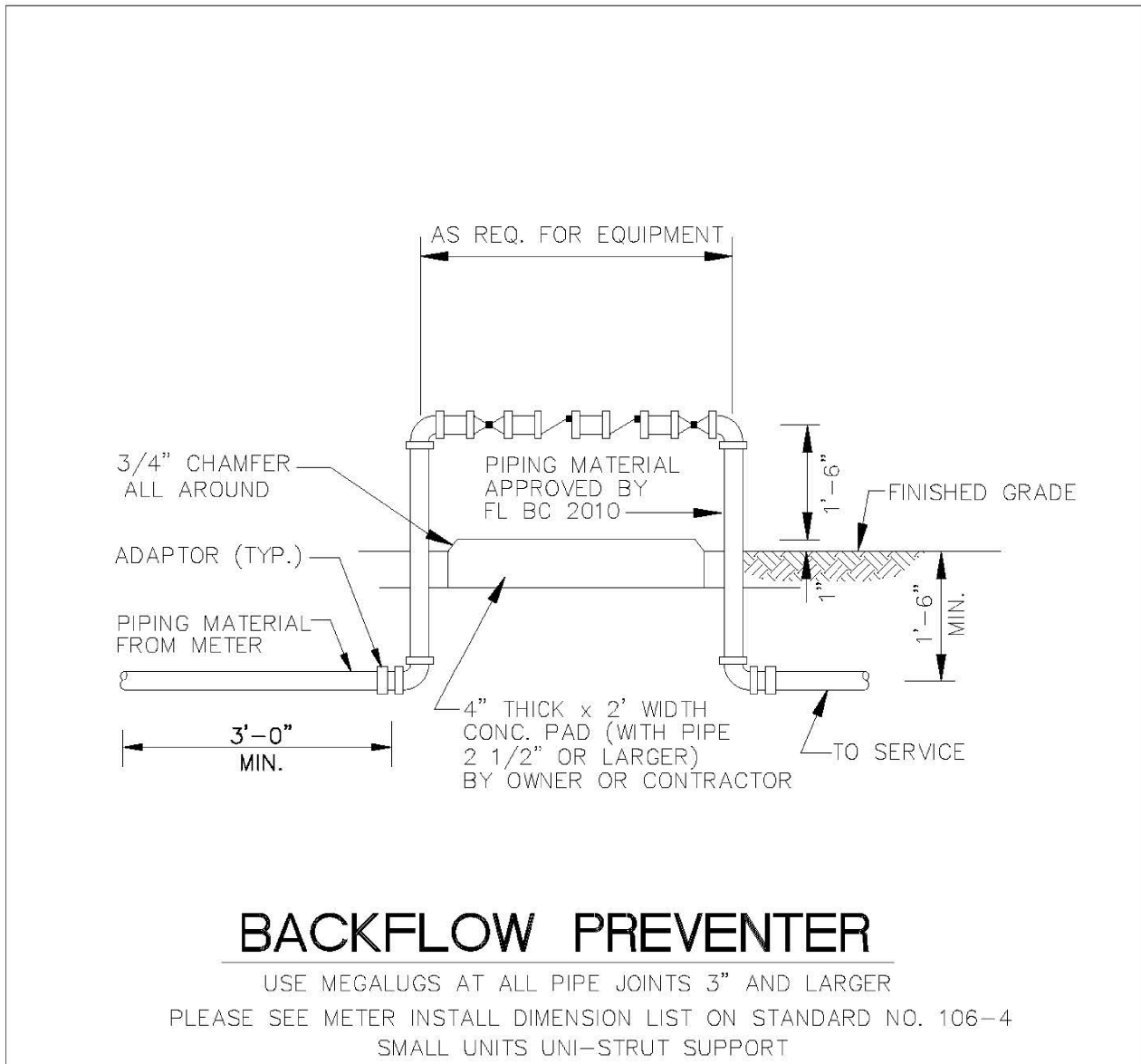
METER BOX INSTALLATION

| ENGINEERING STANDARDS 2022 | | | |
|----------------------------|---------|---|---|
| REVISIONS | | ENGINEERING DIVISION CITY OF POMPAÑO BEACH | METER BOX INSTALLATION FOR 5/8" AND 1" METERS |
| BY | DATE | | |
| S.S. | 11-2012 | | |
| SCALE: N.T.S. | | | DATE: JAN. 2022 DWG. NO. 105-2 |



POTABLE WATER METER BOX COVER

| ENGINEERING STANDARDS 2022 | | | |
|----------------------------|---------|---|-----------------------------------|
| REVISIONS | | ENGINEERING DIVISION CITY OF POMPAÑO BEACH | TYPICAL METER BOX COVER |
| BY | DATE | | |
| S.S. | 11-2012 | | |
| SCALE: N.T.S. | | | DATE: JAN. 2022 DWG. NO. 105-3 |



BACKFLOW PREVENTER

USE MEGALUGS AT ALL PIPE JOINTS 3" AND LARGER
PLEASE SEE METER INSTALL DIMENSION LIST ON STANDARD NO. 106-4
SMALL UNITS UNI-STRUT SUPPORT

| ENGINEERING STANDARDS 2022 | | | |
|----------------------------|---------|---|----------------------------------|
| REVISIONS | | ENGINEERING DIVISION CITY OF POMPAÑO BEACH | BACKFLOW PREVENTER |
| BY | DATE | | |
| S.S. | 04-2008 | | |
| T.W. | 03-2008 | | |
| S.S. | 11-2012 | | |
| S.S. | 01-2013 | | |
| SCALE: N.T.S. | | | DATE: MAY 2022 DWG. NO. 106-1 |



Know what's below.
Call before you dig.

| CITY OF POMPAÑO BEACH | | | |
|--|-----------------|-----------------------------------|----------|
| STANDARD WATER DETAILS | | | |
| PALM AIRE TENNIS CENTER | | | |
| RWB / LINARES ARCHITECTURE | | | |
| WINNINGHAM & FRADLEY | | | |
| ENGINEERS • PLANNERS • SURVEYORS | | | |
| 4411 STREET • OAKLAND PARK, FL 33334 | | | |
| office: 954 771 0288 • fax: 954 771 0288 • www.winfrad.com | | | |
| DESIGNED: AMF | DATE: 10/2024 | PUBLISHED: 3/10/2025, 12:09:54 PM | |
| DRAWN: AMF | DATE: 10/2024 | PROJECT NUMBER | SHEET |
| CHECKED: BMP | DATE: PZ23-1209 | 000922036 | WD1 OF 4 |